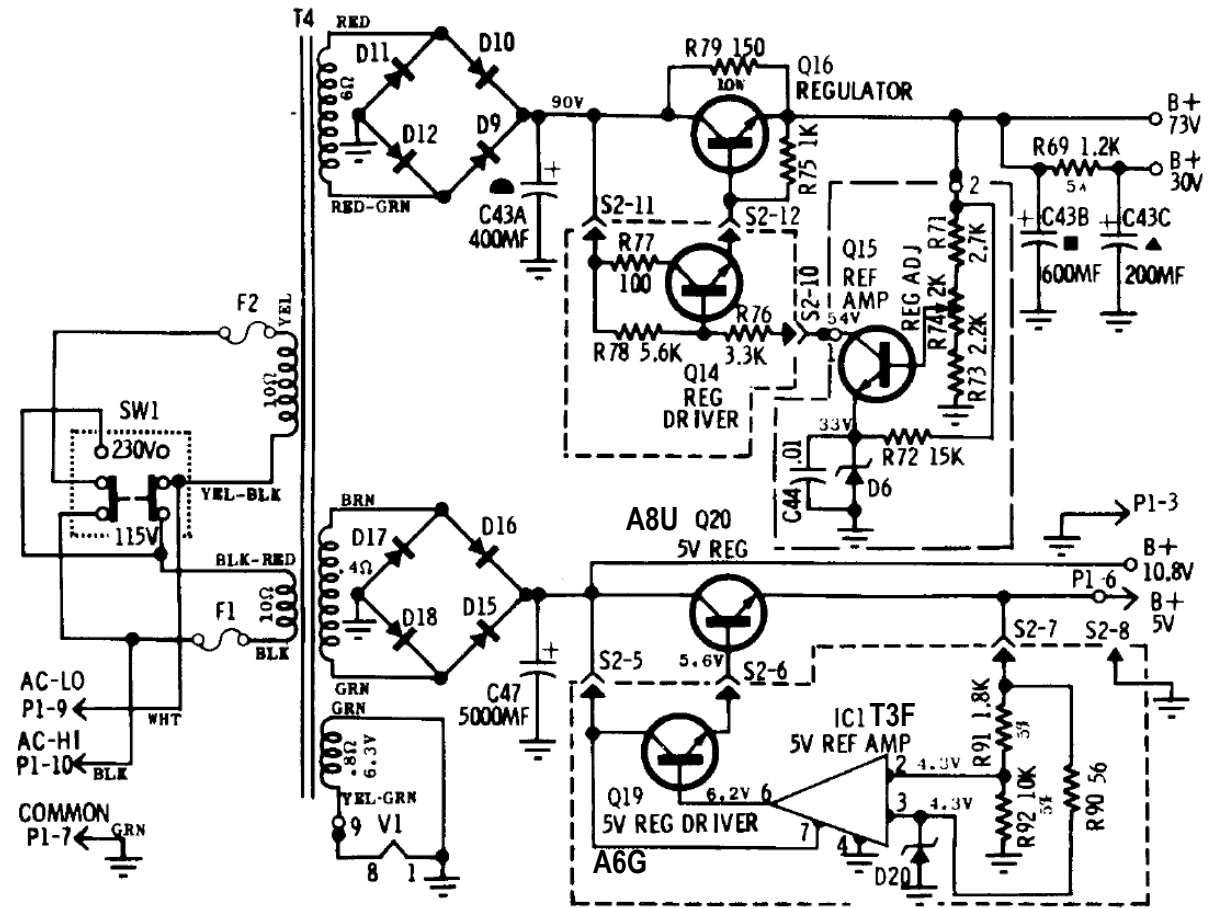


A6H = 2N4400
P2S = 2N4403
A1M = 2N3500
A8H = 2N4400
A6J = 2N4400
A5U = 2N4400
P2S = 2N4403
A5F = 2N3500 (AK: 2N3501?, 2N5551?, 2N5832?)
A6Z = MJ3030/2N5157/2N3902
P2W = 2N4403
A1C = MJ3029/2N5151/NTE162 - NPN Vert Defl
A2J = 2N4400
A8G = 2N4409
A8W = 2N3442
P2V = 2N4030
D1D = 1N4007
D1K = 1N4007
91A05 = 1N4005
D1C = MSD6102/1N914 (2 REQUIRED)
B2L = ??? - NPN Horiz Output

AK: 7696 = BUY69

AK: Reference Amp in +5V Power Supply = LM741
AK: A6G = MPSU07?
AK: A80 = 2N3055?
AK: „D20“ = 4,3V Zener Diode



POWER SUPPLY